



Bathing establishment Fact Sheet

Name of bathing establishment	IMPERIALE
Address	Piazza Belvedere, 44
City	Tirrenia (PI)
Contacts	+39 050 37673 – bagnoimperiale@gmail.com
Website	https://www.bagnoimperiale.it/

TESTED BY: [Handy Social Promotion Association Surpassable](#) in summer 2024

Please note The following information refers to the date of verification shown at the bottom of each sheet. **The Association** is not responsible for any significant changes made by the property after the visit.

Summary

Bathing establishment Fact Sheet	1
Arrival at the property.....	2
Private/public parking.....	2
Pathway from the car park to the main entrance	3
Reception reception	4
Bar/restaurant	5
Internal pathways and common services	7
Internal pathways.....	7
Toilet and shower for guests with reduced mobility	8
Changing room	10
Beach.....	11
Children's play area	13
Swimming pool	13
Medical practices/healthcare facilities.....	14



Project carried out with the contribution of the





Arrival at the property

Private/public parking

Presence of private parking	YES
Type of private parking fund	asphalt
Presence of parking space reserved for people with disabilities	YES
Public parking nearby	YES, Piazza Belvedere and generally has 1 parking space, every 50, reserved for the disabled, highlighted with horizontal and/or vertical signs.
Type of public parking floor	asphalt
	





Pathway from the car park to the main entrance

Pathway from the car park to the entrance	via a ramp 16 m long, > 90 cm wide, slope 10.5 %.
There are indicators and tactile maps	NO
Useful width of door/entrance gate	greater than 90 cm, with a step at the end of the ramp and an entrance door step that can be overcome by means of two removable ramps





Reception reception

Umbrella booking system	<input checked="" type="checkbox"/> Via the web <input checked="" type="checkbox"/> By phone <input checked="" type="checkbox"/> On-site
Presence of multilingual staff	YES
Presence of plant map with legend of services available	NO
Presence of visuo-tactile map	NO

Project carried out with the contribution of the





Bulletin board/information panels with an average height of 130 cm in a well-lit area and a font size of at least 14 dpi with a contrast ratio greater than 4.5:1	NO
The staff followed a training course on welcoming people with different disabilities	NO

Bar/restaurant

Type of venue	Bar/restaurant /Self service
Access to the premises	Access to the bar with a 6 cm step Access to the restaurant with a 4 cm step
Useful width of door/entrance gate	Above 90 cm
Bar bench	Above 100 cm . Buffet counter high from the floor 84.5 cm
Types of tables	With 4 legged (internal and external) and central support that can hinder approaching the wheelchair
Space under floor tables	Tables 4-legged 76 cm, outer 62.5 cm, central support 69 cm
Multilingual menu	YES
Large print menus	NO
Braille menu	NO
Table service for people with disabilities	YES
Availability of foods for celiacs	<input type="checkbox"/> bread <input type="checkbox"/> pasta <input type="checkbox"/> biscuits <input checked="" type="checkbox"/> ice cream <input checked="" type="checkbox"/> Pre-packaged foods

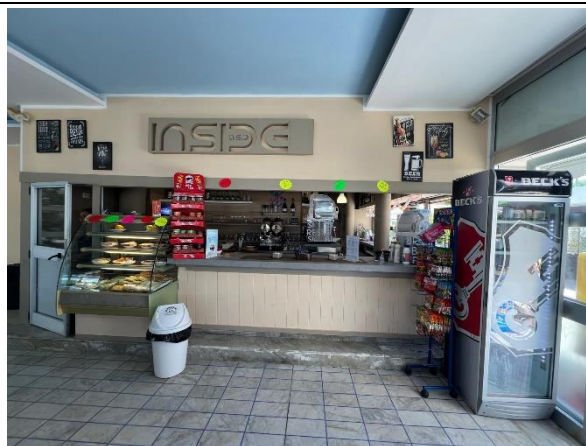


Project promoted by



Regione Toscana

6 cm



Project carried out with the contribution of the



Presidenza del
Consiglio dei Ministri
Ministro per la disabilità



Internal pathways and common services

Internal pathways

Indicate whether the pathways connecting the entrance to the beach are flat or with ramps in addition to those already described

Area reserved for disabled people is located on the left side of the beach front and can be reached flat through the same access that leads to the bathrooms. Present ramp at the end of the pathway 85 cm long, > 90cm wide, slope 10.5 %





Toilet and shower for guests with reduced mobility

Number of accessible toilets for guests with reduced mobility	1
Access to the premises	flat
Usable width of the entrance door	87.5 cm
Toilet height	51.3 cm
Open front toilet seat	YES
Support handles	on both sides
Flexible shower on the side of the toilet	YES

Project carried out with the contribution of the







Free space on the sides of the toilet	left 25,3 Cm right Above 90 cm frontal Above 90 cm
Electric doorbell/telephone	YES
Washbasin with space underneath for wheelchair approach	68 cm
Height from the ground lower edge mirror	sufficient for use by a person in a wheelchair
Baby changing table	NO
	
	





	
Accessible shower available for guests with reduced mobility	YES in common with the toilet room
Type of shower	open type
Floor-level shower	YES
Shower chair	missing
Support handle	YES
Presence of shower head or sliding rails	ups and downs with the lowest point reachable by a seated person
Electric doorbell/telephone	YES



Changing room

Changing room accessible to guests with reduced mobility available	YES
Access to the premises	Same path leading to the toilet room
Useful width of door/entrance gate	Above 90 cm
Locker room size	width 2.62 m and depth 1.31 cm
Presence of cot	NO
Coat rack height from the ground	Above 140 cm





Beach

Type of beach	sand
Beach access	via ramp 85 cm long, > 90cm wide, slope 10.5 %
Walkway to reach the umbrellas	YES
Type of walkway	cement
Width of the walkway	100 cm
	






<p>Removable Platform between the walkway and the umbrella station to facilitate the passage and parking wheelchair</p>	<p>YES</p>
<p>Amphibious beach chair available for helping people with reduced mobility to enjoy swimming (owned by the establishment or by association)</p>	<p>YES</p>





Children's play area

Children's play area	inaccessible to children with reduced mobility due to sandy bottom
There are games for children with reduced mobility	NO
	

Swimming pool

The property has a swimming pool	YES , but not accessible to people with reduced mobility
	





Medical practices/healthcare facilities

Hospitals near the property	For HEALTH EMERGENCIES 112 or 118 Azienda Ospedaliera Universitaria Pisana Emergency Room 050 992300 (it is active from 8.00 in the morning to 01.00 at night, after this time the Emergency Room can be contacted through the switchboard) Toll-free number 800.015877 Switchboard 050.992111 Santa Chiara Hospital Via Roma, 67 – Pisa (in the city center) Cisanello Hospital Via Paradisa, 2 - Cisanello - Pisa. On the eastern outskirts of Pisa
Other healthcare facilities	tourist medical guard for the Pisan coast via Flavio Andò 5 in Marina di Pisa every day from 10 to 13 and from 16 to 19, tel. 050 954681.

TESTED BY: [Handy Social Promotion Association Surpassable](#) in summer 2024

